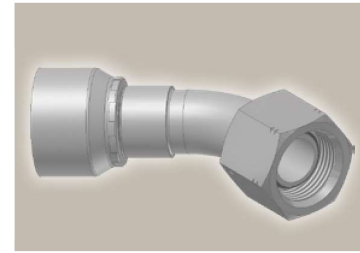
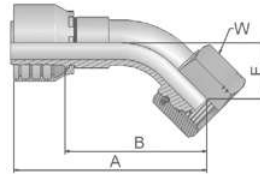


**EB** **BSP Swivel Female  
with O-Ring  
45° Elbow (60° Cone)**

BS 5200 – ISO 12151-6 – DKOR 45°



| Part Number |             | Hose I.D. |       |      |      | Thread   | A   | B   | E  | W  |
|-------------|-------------|-----------|-------|------|------|----------|-----|-----|----|----|
| 46 series   | 48 series   | DN        | Inch  | Size | mm   | BSP      | mm  | mm  | mm | mm |
| 1EB46-4-4   |             | 6         | 1/4   | -4   | 6.4  | 1/4x19   | 59  | 36  | 14 | 19 |
|             | 1EB48-4-4   | 6         | 1/4   | -4   | 6.4  | 1/4x19   | 57  | 34  | 14 | 19 |
| 1EB46-6-6   | 1EB48-6-6   | 10        | 3/8   | -6   | 9.5  | 3/8x19   | 69  | 46  | 17 | 22 |
| 1EB46-8-8   | 1EB48-8-8   | 12        | 1/2   | -8   | 12.7 | 1/2x14   | 71  | 48  | 20 | 27 |
| 1EB46-12-10 | 1EB48-12-10 | 16        | 5/8   | -10  | 15.9 | 3/4x14   | 78  | 52  | 21 | 32 |
| 1EB46-12-12 | 1EB48-12-12 | 19        | 3/4   | -12  | 19.1 | 3/4x14   | 89  | 63  | 27 | 32 |
| 1EB46-16-16 | 1EB48-16-16 | 25        | 1     | -16  | 25.4 | 1x11     | 112 | 82  | 33 | 41 |
|             | 1EB48-20-20 | 31        | 1 1/4 | -20  | 31.8 | 1 1/4x11 | 138 | 91  | 35 | 50 |
|             | 1EB48-24-24 | 38        | 1 1/2 | -24  | 38.1 | 1 1/2x11 | 157 | 119 | 50 | 55 |

Hose fittings are delivered with ozone resistant Nitrile (NBR) O-ring as a standard version. Working temperature from -40 °C up to +105 °C.  
Hose fittings with special O-rings (Viton or EPDM) available on request. O-ring dimensions and part-numbers see in section Eb.

46/48 Series

Approved **fitting series** for **hose types**, depending on size: Also available in stainless steel. Details can be found in CAT 4400.1/UK

|                        |       |       |       |       |       |         |            |       |       |     |       |       |            |       |       |     |     |
|------------------------|-------|-------|-------|-------|-------|---------|------------|-------|-------|-----|-------|-------|------------|-------|-------|-----|-----|
| <b>46</b> or <b>48</b> | 441   | 461LT | 462   | 462TC | 462ST | 629PU   | 692PU Twin |       |       |     |       |       |            |       |       |     |     |
| <b>46</b>              | 463   | 492   | 492ST | 492TC | 692   | 692Twin | 692TC      | BCH1  |       |     |       |       |            |       |       |     |     |
| <b>48</b>              | 301SN | 304   | 387   | 387ST | 387TC | 421RH   | 421SN      | 426   | 421TC | 436 | 441RH | 462PU | 462PU Twin | BCH2  | HT2   | ... |     |
|                        | 471TC | 477   | 477ST | 477TC | 477RH | 487     | 487ST      | 487TC | 493   | 787 | 787TC | 787ST | 797        | 797TC | 797ST | 811 | 881 |